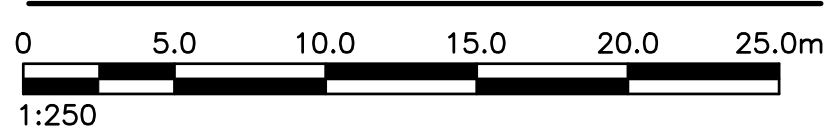


- NOTES:**
- ALL DIMENSIONS ARE IN MILLIMETRES.
 - THE HORIZONTAL DATUM UTILIZED IS NAD83 (CSRS) NEW BRUNSWICK DOUBLE STEREOGRAPHIC PROJECTION.
 - ALL ELEVATIONS ARE IN GEODETIC METRES AND REFERENCED TO THE CANADIAN GEODETIC VERTICAL DATUM OF 1928 (CGVD28)
 - ALL CHAINAGES ARE IN METRES.
 - LOCATION OF EXISTING SERVICES, STRUCTURES AND BUILDINGS APPROXIMATE ONLY.
 - CONTRACTOR TO ENSURE THAT ALL MUNICIPAL INFRASTRUCTURE, PUBLIC UTILITIES, NATURAL GAS AND OTHER INFRASTRUCTURE ARE LOCATED IN THE FIELD PRIOR TO START OF EXCAVATION.
 - ALL FIELD SURVEY INFORMATION PROVIDED BY CBCL LIMITED.
 - TYPICAL TRENCH DETAIL, PIPE INSTALLATION, FITTINGS & STRUCTURES, ETC. REFER TO CITY, TOWN OR VILLAGE SPECIFICATIONS FOR DEVELOPERS.
 - SANITARY MANHOLES TO BE 1050mm UNLESS OTHERWISE NOTED.
 - ALL CATCH BASINS, MANHOLES, GATE VALVE CHAMBERS AND AIR RELEASE CHAMBERS TO HAVE MINIMUM 100mm RISER BETWEEN FRAME & CONCRETE COVER. TOP RISER TO BE MADE OF RUBBER.
 - AT ALL PIPE CONNECTIONS TO EXISTING WATER MAINS, FUTURE EXTENSIONS AND FIRE LINES, PROVIDE A 25mm (1") MAIN STOP AND SADDLE BOTH SIDES OF GATE VALVE TO FACILITATE TESTING AND CHLORINATION.
 - ALL WATER LINES LESS THAN 1.8m COVER TO BE INSULATED WITH 50mm THICK RIGID "STYROFOAM SM" BOARD.
 - ALL WATER, SANITARY AND STORM STUBS TO BE PLUGGED /CAPPED & WATER MAIN FITTINGS TO BE RESTRAINED. LOCATION TO BE MARKED WITH A 38mm STUD FROM INVERT OF PIPE TO 300mm BELOW FINISH GRADE

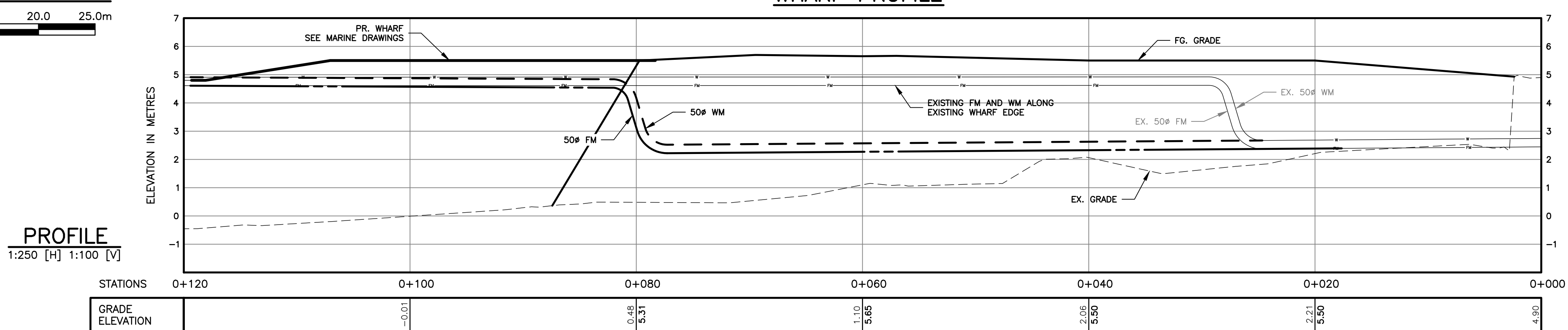
LEGEND:

PROPOSED	EXISTING
● SANITARY MANHOLE (SMH)	○
■ CATCH BASIN (CB)	□
● STORM MANHOLE (STMH)	⊙
— SANITARY SEWER	— SAN
— SANITARY FORCE MAIN	— FM
— STORM SEWER	— ST
— WATER MAIN	— W
— COMBINED SEWER	— CS
— OULVERT	—
⊗ ISOLATION VALVE (BUTTERFLY/GATE)	⊗
⊗ CURB STOP	⊗
⊗ VALVE IN CHAMBER	⊗
⊗ EASEMENT	⊗
— P/L	— P/L
— E/P	— E/P
— ROAD SHOULDER	—
— GUIDE RAIL	— G/R
— SIDEWALK	— S/W
— CURB	— CURB
— CURB & GUTTER	— C/G
— DITCH	— DITCH
— FENCE	— FENCE
— OVERHEAD UTILITIES	— O/H
— UNDERGROUND UTILITIES	— U/G
— UNDERGROUND ELECTRICAL	—
⊗ ELECTRICAL / TELEPHONE MANHOLE	⊗
⊗ POWER, UTILITY, GUY POLES	⊗
⊗ LIGHT STANDARD	⊗
⊗ SIGN	⊗
⊗ BENCH MARK	⊗
⊗ BORE HOLE / TEST PIT	⊗
⊗ CONTOUR	⊗
⊗ GRADE	⊗

SITE PLAN—TSA WHARF APPROACH



WHARF PROFILE



PROFILE
1:250 [H] 1:100 [V]

**NOT FOR
CONSTRUCTION**



- NOTES:**
1. ALL DIMENSIONS ARE IN MILLIMETRES.
 2. THE HORIZONTAL DATUM UTILIZED IS NAD83 (CSRS) NEW BRUNSWICK DOUBLE STEREOGRAPHIC PROJECTION.
 3. ALL ELEVATIONS ARE IN GEODETIC METRES AND REFERENCED TO THE CANADIAN GEODETIC VERTICAL DATUM OF 1928 (CGVD28)
 4. ALL CHAINAGES ARE IN METRES.
 5. LOCATION OF EXISTING SERVICES, STRUCTURES AND BUILDINGS APPROXIMATE ONLY.
 6. CONTRACTOR TO ENSURE THAT ALL MUNICIPAL INFRASTRUCTURE, PUBLIC UTILITIES, NATURAL GAS AND OTHER INFRASTRUCTURE ARE LOCATED IN THE FIELD PRIOR TO START OF EXCAVATION.
 7. ALL FIELD SURVEY INFORMATION PROVIDED BY CBCL LIMITED.
 8. TYPICAL TRENCH DETAIL, PIPE INSTALLATION, FITTINGS & STRUCTURES, ETC. REFER TO CITY, TOWN OR VILLAGE SPECIFICATIONS FOR DEVELOPERS.
 9. SANITARY MANHOLES TO BE 1050# UNLESS OTHERWISE NOTED.
 10. ALL CATCH BASINS, MANHOLES, GATE VALVE CHAMBERS AND AIR RELEASE CHAMBERS TO HAVE MINIMUM 100mm RISER BETWEEN FRAME & CONCRETE COVER. TOP RISER TO BE MADE OF RUBBER.
 11. AT ALL PIPE CONNECTIONS TO EXISTING WATER MAINS, FUTURE EXTENSIONS AND FIRE LINES, PROVIDE A 25mm (1") MAIN STOP AND SADDLE BOTH SIDES OF GATE VALVE TO FACILITATE TESTING AND CHLORINATION.
 12. ALL WATER LINES LESS THAN 1.8m COVER TO BE INSULATED WITH 50mm THICK RIGID "STYROFOAM SM" BOARD.
 13. ALL WATER, SANITARY AND STORM STUBS TO BE PLUGGED /CAPPED & WATER MAIN FITTINGS TO BE RESTRAINED. LOCATION TO BE MARKED WITH A 38x89 STUD FROM INVERT OF PIPE TO 300mm BELOW FINISH GRADE

LEGEND:

PROPOSED	EXISTING

A	ISSUED FOR ENVIRONMENTAL PERMITTING	MAY 6/24	DLM
No.	Description	Date	By

Revision or Issue



TOWN OF SAINT ANDREWS
TSA WHARF APPROACH REPLACEMENT

CIVIL
GRADING PLAN



CBCL No. 242835.00	Contract No. TSA 2024-03
Date MAR 2024	Scale AS NOTED
Designed DLM	Drawn WMB
Checked BMM	Approved DLM
Sheet No. 2	of 4
Drawing No. C02	



- NOTES:**
1. ALL DIMENSIONS ARE IN MILLIMETRES.
 2. THE HORIZONTAL DATUM UTILIZED IS NAD83 (CSRS) NEW BRUNSWICK DOUBLE STEREOGRAPHIC PROJECTION.
 3. ALL ELEVATIONS ARE IN GEODETIC METRES AND REFERENCED TO THE CANADIAN GEODETIC VERTICAL DATUM OF 1928 (CGVD28)
 4. ALL CHAINAGES ARE IN METRES.
 5. LOCATION OF EXISTING SERVICES, STRUCTURES AND BUILDINGS APPROXIMATE ONLY.
 6. CONTRACTOR TO ENSURE THAT ALL MUNICIPAL INFRASTRUCTURE, PUBLIC UTILITIES, NATURAL GAS AND OTHER INFRASTRUCTURE ARE LOCATED IN THE FIELD PRIOR TO START OF EXCAVATION.
 7. ALL FIELD SURVEY INFORMATION PROVIDED BY CBCL LIMITED.
 8. TYPICAL TRENCH DETAIL, PIPE INSTALLATION, FITTINGS & STRUCTURES, ETC. REFER TO CITY, TOWN OR VILLAGE SPECIFICATIONS FOR DEVELOPERS.
 9. SANITARY MANHOLES TO BE 1050# UNLESS OTHERWISE NOTED.
 10. ALL CATCH BASINS, MANHOLES, GATE VALVE CHAMBERS AND AIR RELEASE CHAMBERS TO HAVE MINIMUM 100mm RISER BETWEEN FRAME & CONCRETE COVER. TOP RISER TO BE MADE OF RUBBER.
 11. AT ALL PIPE CONNECTIONS TO EXISTING WATER MAINS, FUTURE EXTENSIONS AND FIRE LINES, PROVIDE A 25mm (1") MAIN STOP AND SADDLE BOTH SIDES OF GATE VALVE TO FACILITATE TESTING AND CHLORINATION.
 12. ALL WATER LINES LESS THAN 1.8m COVER TO BE INSULATED WITH 50mm THICK RIGID "STYROFOAM SM" BOARD.
 13. ALL WATER, SANITARY AND STORM STUBS TO BE PLUGGED /CAPPED & WATER MAIN FITTINGS TO BE RESTRAINED. LOCATION TO BE MARKED WITH A 38x89 STUD FROM INVERT OF PIPE TO 300mm BELOW FINISH GRADE

LEGEND:

PROPOSED	EXISTING
● SANITARY MANHOLE (SMH)	○
■ CATCH BASIN (CB)	□
⊙ STORM MANHOLE (STMH)	⊙
— SANITARY SEWER	— SAN
— SANITARY FORCE MAIN	— FM
— STORM SEWER	— ST
— WATER MAIN	— W
— COMBINED SEWER	— CS
() CULVERT	()
⊗ ISOLATION VALVE (BUTTERFLY/GATE)	⊗
⊙ CURB STOP	⊙
⊗ VALVE IN CHAMBER	⊗
● FIRE HYDRANT	●
— P/L PROPERTY LINE	— P/L
— EASEMENT	— EAS
— E/P EDGE OF PAVEMENT	— E/P
— ROAD SHOULDER	—
— GUIDE RAIL	— G/R
— SIDEWALK	— S/W
— CURB	— curb
— CURB & GUTTER	— C/G
— DITCH	—
— FENCE	— X
— OVERHEAD UTILITIES	— O/H
— UNDERGROUND UTILITIES	— U/G
— UNDERGROUND ELECTRICAL	— E
⊗ ELECTRICAL / TELEPHONE MANHOLE	⊗
● POWER, UTILITY, GUY POLES	●
⊙ LIGHT STANDARD	⊙
⊙ SIGN	⊙
⊙ BENCH MARK	⊙
⊙ BORE HOLE / TEST PIT	⊙
⊙ CONTOUR	⊙
⊙ GRADE	⊙

A	ISSUED FOR ENVIRONMENTAL PERMITTING	MAY 6/24 DLM
No.	Description	Date By

Revision or Issue

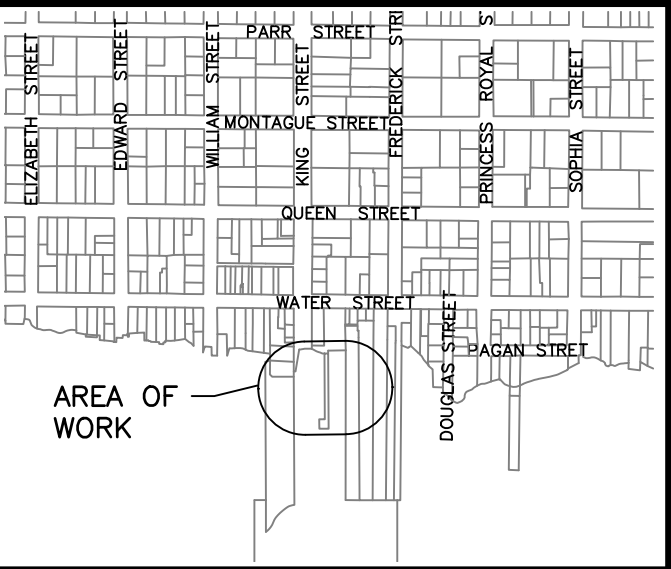
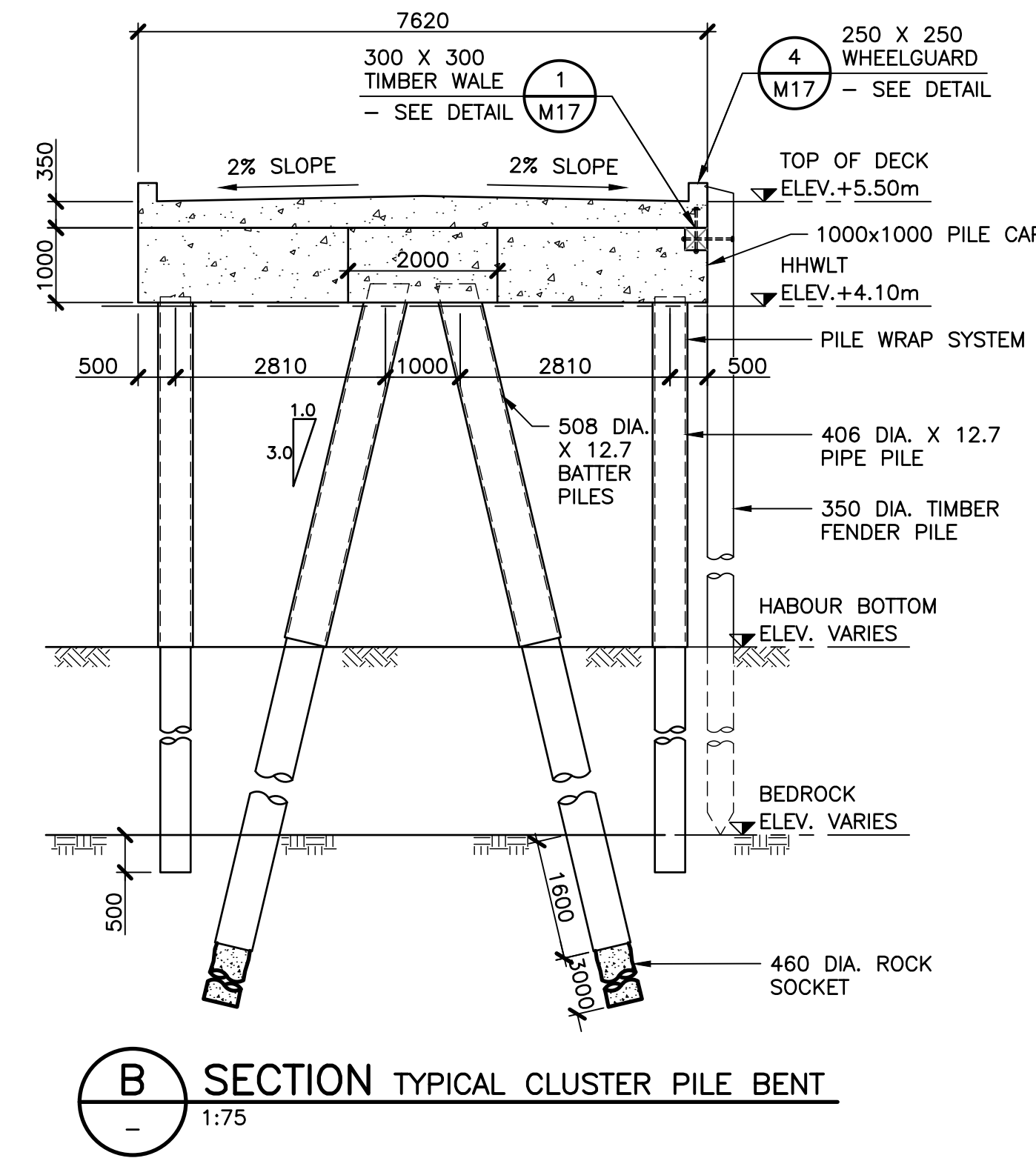
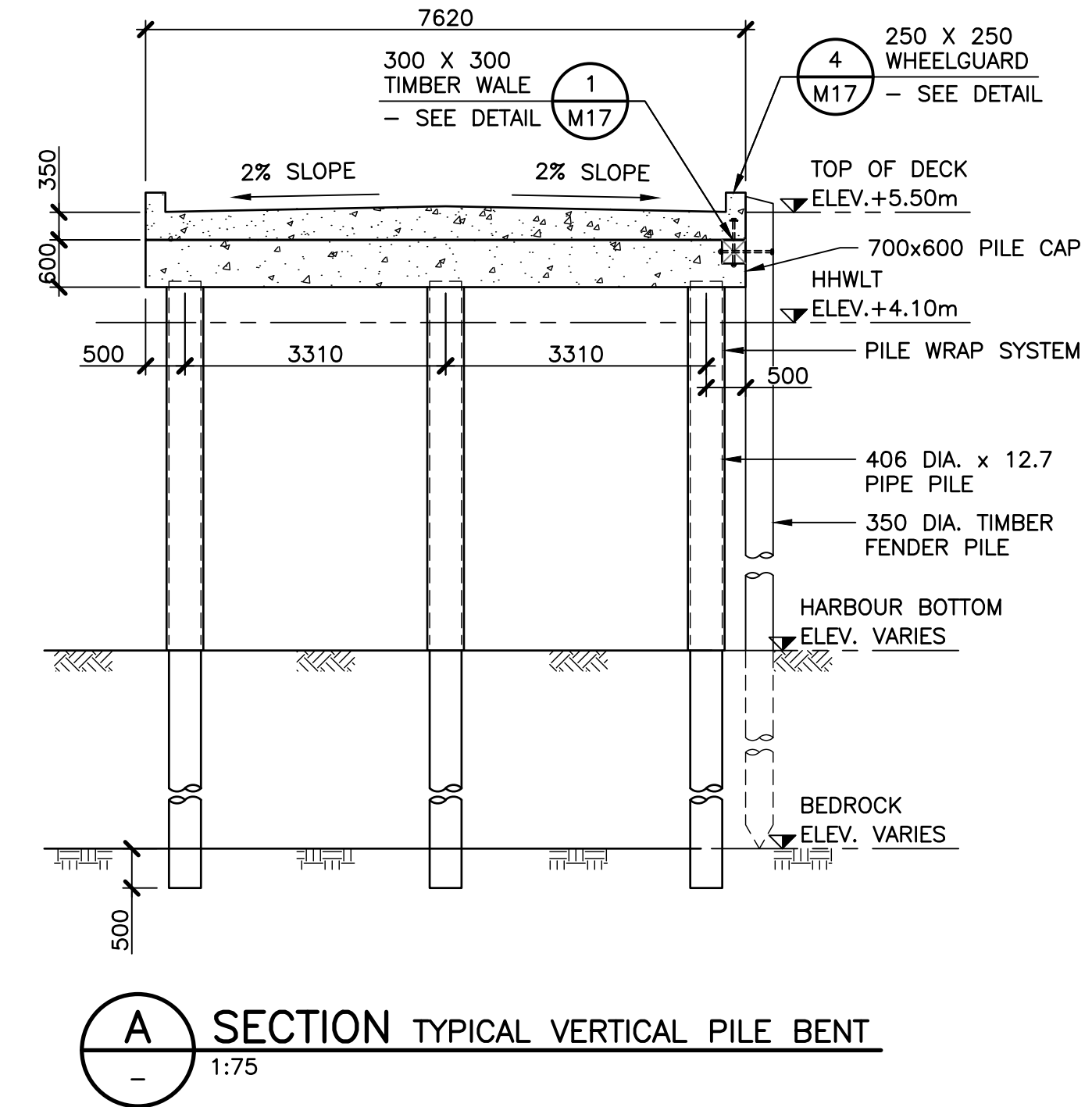
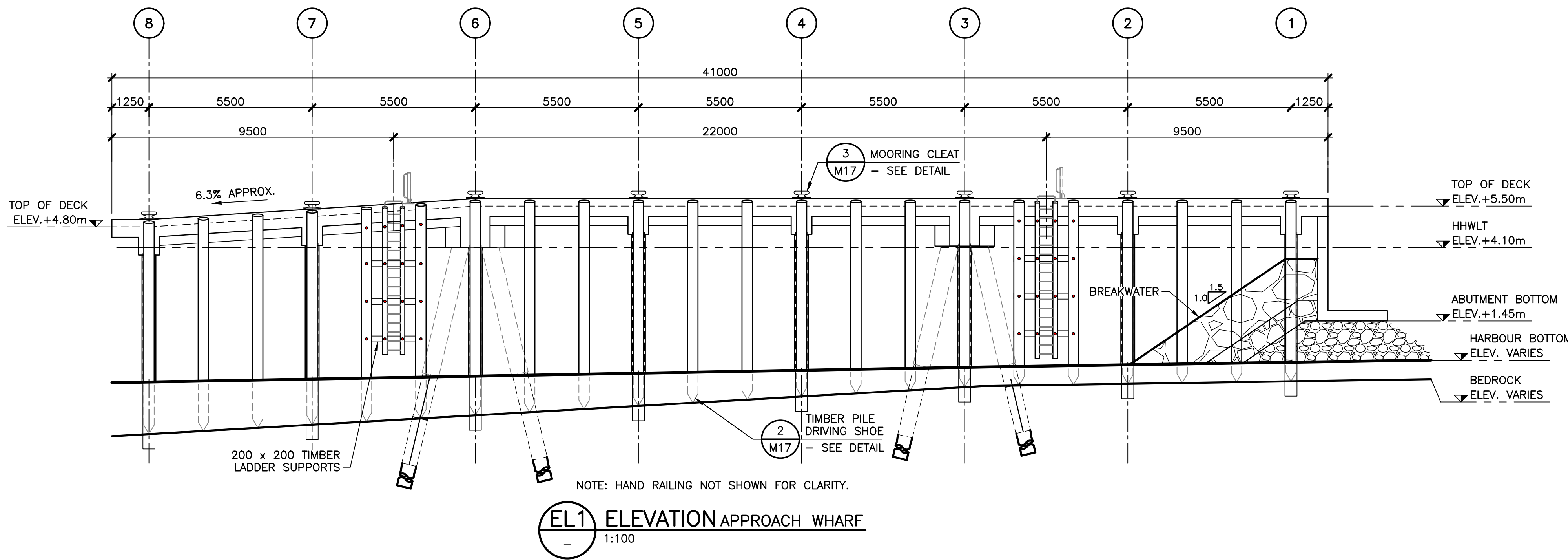
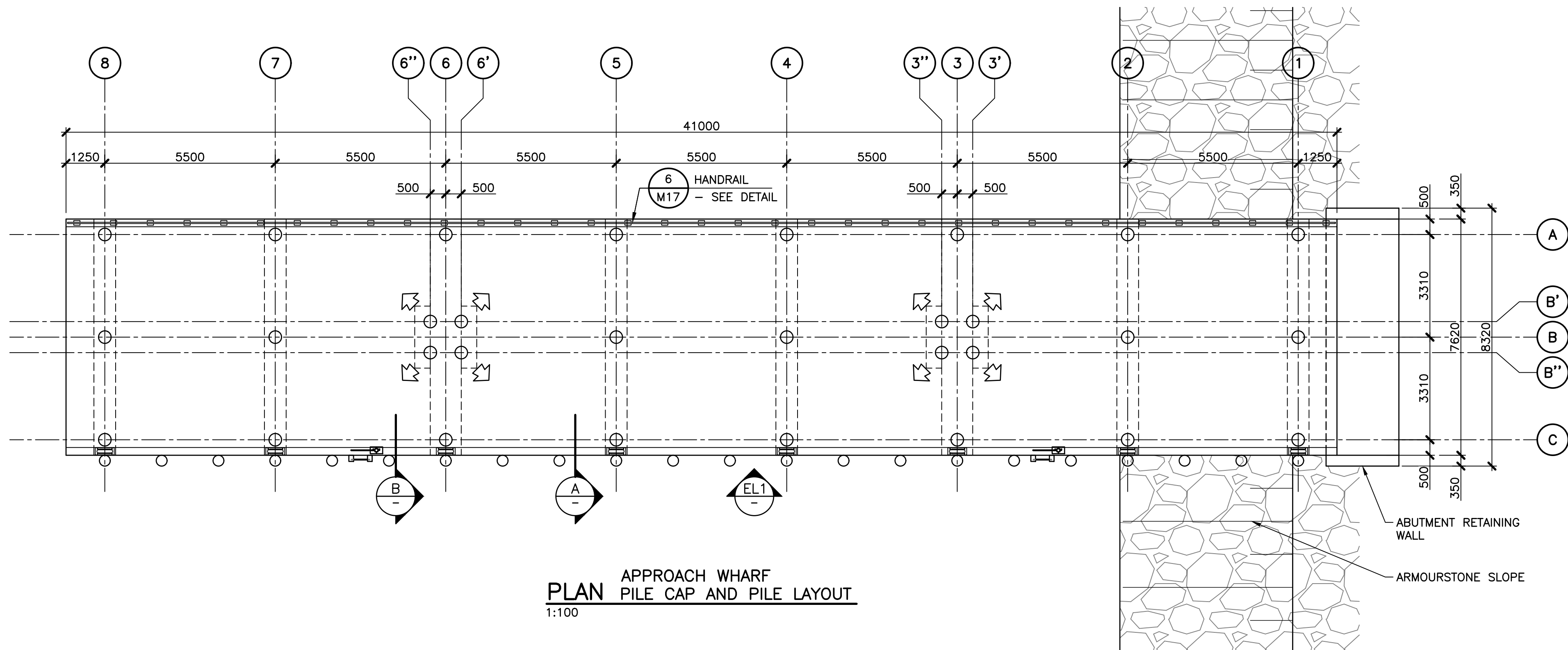


TOWN OF SAINT ANDREWS
TSA WHARF APPROACH
REPLACEMENT

CIVIL
EROSION AND SEDIMENT
CONTROL PLAN



CBCL No 242835.00	Contract No TSA 2024-03
Date MAR 2024	Scale AS NOTED
Designed DLM	Drawn WMB
Checked BMM	Approved DLM
Sheet No 3	of 4
Drawing No C03	



KEY PLAN
1:10000

No.	Description	Date	By
A	ISSUED FOR ENVIRONMENTAL PERMITTING	MAY 6/24	GKP

Revision or Issue

TOWN OF SAINT ANDREWS

TSA WHARF APPROACH
REPLACEMENT

STRUCTURAL
APPROACH TRESTLE -
GENERAL ARRANGEMENT
PLAN, ELEVATION AND
SECTIONS



Contract No	Date	Scale
242835-00	APR 2024	AS NOTED
Designed	Drawn	
MK	LL	
Checked	Approved	
KM		
Sheet No	5 of 16	
Drawing No		

M12